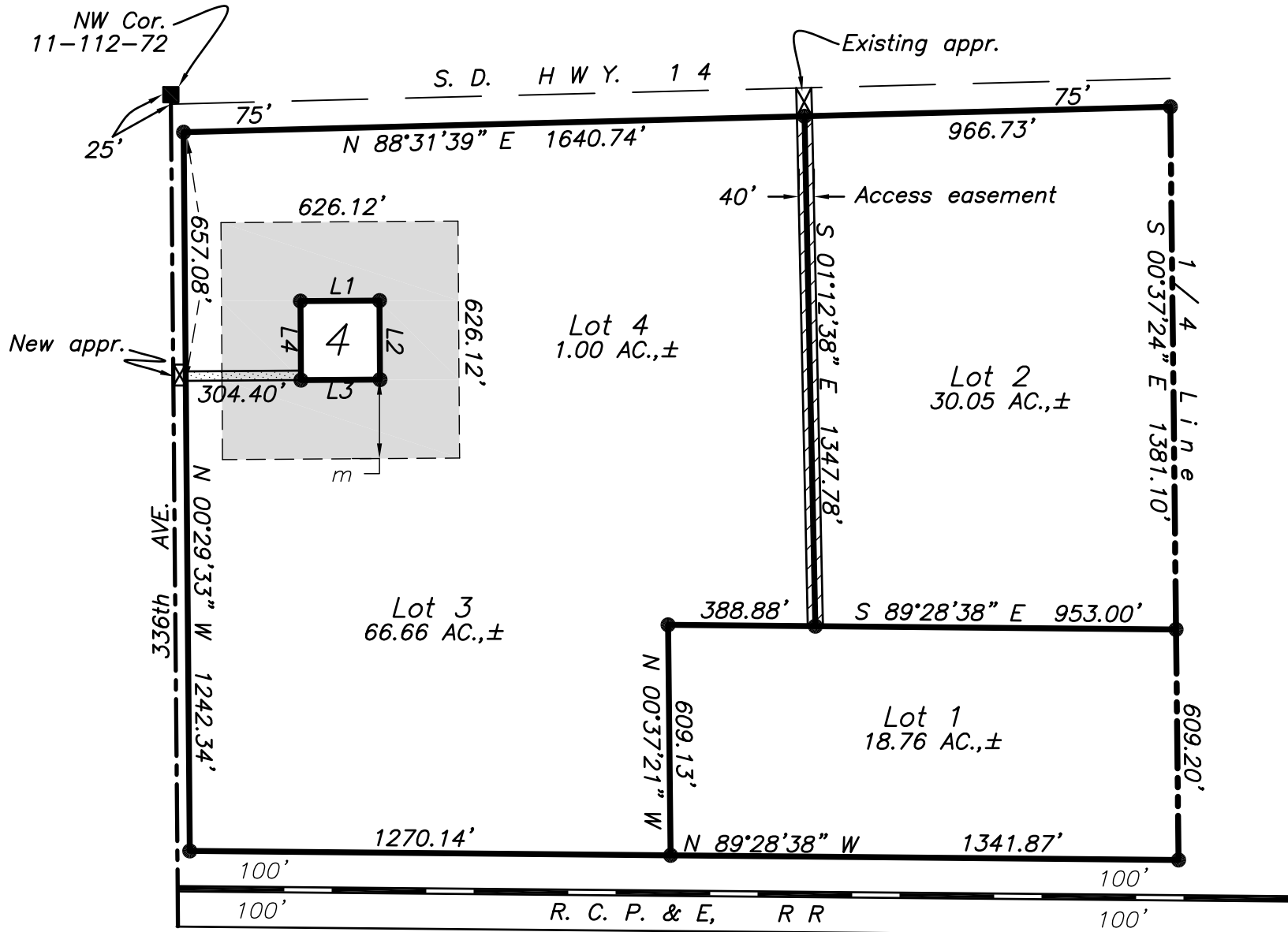


**Plat of LOTS 1-4**  
**RESEARCH FARM ADDITION**  
 a subdivision of the  
**NW1/4 LYING NORTH OF THE RAILROAD**  
**SECTION 11, T112N, R72W of the 5th P.M.**  
**CITY OF HIGHMORE**  
**HYDE COUNTY, SOUTH DAKOTA**

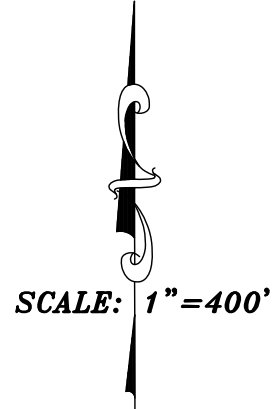


LINE	BEARING	LENGTH
L1	N 89°37'05" E	208.71'
L2	S 00°22'55" E	208.71'
L3	S 89°37'05" W	208.71'
L4	N 00°22'55" W	208.71'

ACCESS APPROVAL

This approval does not replace the need for any permits required by law, including Administrative Rule of South Dakota 70:09:01:02.

\_\_\_\_\_  
SDDOT AREA ENGINEER



**LEGEND**

- Set 5/8" rebar w/cap #4424
- Denotes rebar w/cap
- Denotes "No build area" encompassing the weather station in Lot 4
- ▨ Denotes 25' access easement

ACCESS APPROVAL

Access as shown hereon is approved

\_\_\_\_\_  
Co. Hwy. Superintendent